

Anyway, an hour wasted (yes it did take me that long) and a lesson learnt I had to have rethink. I still wanted a similar set-up, a trail version of what was essentially going to be a different branded version of the classic set-up of a Maxxis Minion up front and High Roller Continental Rubber Queen as a spare. An unlikely pairing, but one that works. The 2.4 Rubber Queens are like tractor tyres, and remind me of Pete Burns lips. They also probably give you a couple of inches of extra suspension. The 2.2's however have a lower profile and are quite a bit narrower. The sensible trail choice. A perfect fit for my frame and when teamed up with the Neuron up front I'm pretty sure I get an extra quarter of a degree of 'slackness' on the old head angle. The reinforced tubelless sidewalls are tough and strong.

PRICE: £51.20
WWW.MADISON.CO.UK
WWW.CONTI-TYRES.CO.UK

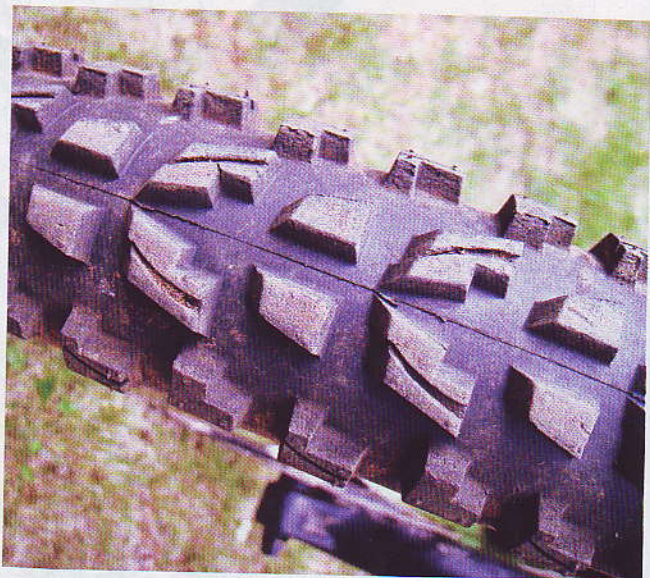
and although it is still a burly tyre it has a compact and agile feel to it. You don't have to muscle it over in to the turns. It rolls fast and feels a lot livelier than the DHFA I had on that other bike. I've not tested this up front so I can't give it a business end 'review, but it does its job out the back perfectly. It has the volume to take rocks and roots in its stride and it drifts into corners and roosts around berms beautifully...I've even had Dirt south east correspondent Rod Fountain spitting sand on a damp day at Chicksands, and I'd say it's worth a try just for that pleasure. Over a year in and a few dirty skids later this one is again holding up very well... and it bloody should do for this kind of money. Maybe that Black Chili compound that's supposedly soft and grippy yet hard wearing and fast rolling isn't just the imagination of some marketing bod. At the end of the day I'm the kind of guy who likes to fit and forget and these two products let me do just that. They are pretty much a permanent fixture from the month of March through to November.

After going through the process of getting a tubelless 2.3 Geax DHFA tyre blown up and on the rim of my rear wheel I discovered it wouldn't fit into the frame of my Commcal Meta 4X. I had been running the set-up on a test bike for a while and I wanted to pair the DHFA up with the Neuron again.

Words: JON GREGORY
Photos: JON GREGORY

Continental Rubber Queen Ust 2.2 Black Chili!

You can tell just by looking at them that these sidewalls are bulletproof.

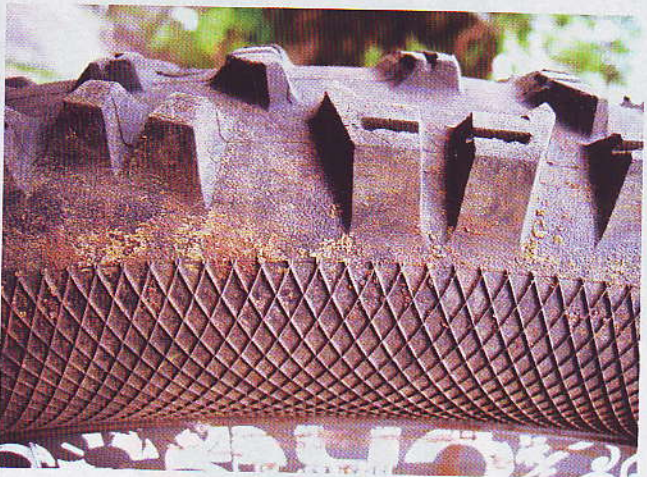


Words: JON GREGORY
Photos: JON GREGORY

If we splitting hairs, this is the handsome and more refined twin of a Maxxis Minion. After running a 2.5 Minion up front in the past and thinking it was just that bit too much to be juggling about all day in the hills on a 4X bike this 2.3 Neuron looked like just the ticket for a gravity trail set-up. The TNT (TubesTube) construction meant I could run them tubelless as well.

I've used lighter tyres in the past and always had bad experiences, so I've been very impressed by the reassurance weight and strength of the sidewalls on these. Even though I would pitch this 2.3 version more towards the aggressive trail end of the market they are more than happy taking on what any downhill course could throw at them. If you want definitely suited to DH use.

On the ground and lined up next to 15 other riders Dean a white back this Neuron (teamed up with a Geax DHFA on the back) had me straight to the front of the



PRICE: £34.99
CHICKEN CYCLE KIT 01525 381 347
WWW.GEAX.COM

pack. Fast rolling...so much so that everybody else was itching for a go on my bike once we lined up again. A different rider on board and the same result. That's a good enough result for me. It's a dual compound tyre and the hard stuff on the centre knobs gets it up to speed quickly, and then bank them over far enough and you will be using the softer compound side knobs. They are very predictable in the turns and I've not felt as confident with a front tyre in a very long while. They are strong, stiff and once you have got them on your rim you know they are not coming off again. I think that the Neuron, teamed up with another Neuron or DHFA out the back...or even better, if you don't mind mixing your labels up a bit, a Conti Rubber Queen, is in my mind, the perfect 'gravity' enduro tyre set-up. A very fast dry and hardback tyre, and with over 18 months on test and many bike swaps later it is holding up beautifully. One tough dependable tyre. Recommended.

Geax Neuron 2.3 TNT



An unlikely pairing but one that works. Two very dependable hard wearing aggressive trail tyres. Both have been run tubelless and stood up to a beating with zero fuss.